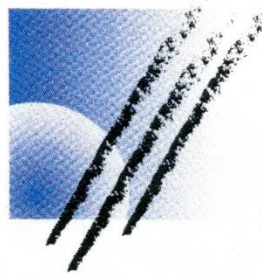


**pflug.**



*Driving gear and conveyor  
technology  
Profiled belts  
Continuous round belts  
turned and plaited*

# **Welded timing belts in short lengths**



# PU timing belts

In our profile technology we make up PU timing belts in short lengths. Mainly types and variations which are not available in sleeves. With PA fabric on the tooth side, the back of the belt, antistatic fabric, coextruded back or with extruded guides.

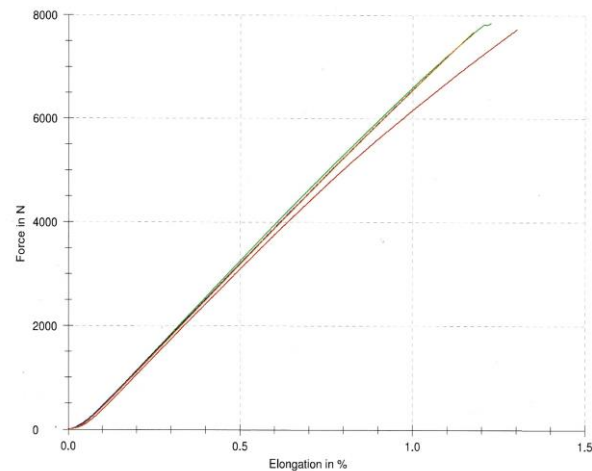
## TEST - BREAKING STRENGTH AND ELONGATION

Article : ZR / SO\_WE\_20160217\_002 Arrange : endless  
 Tape Type : 50 T5 1000-V (30) / V (40) Testside inside : Tooth-side  
 Dimension : 1000x50x2,3 Measuring Head : MK3 / 1 kN  
 Carcass : Steelcord Testing Velocity : 20 mm/min  
 Coating : Pretension Fv : 50 N  
 Condition : new Tester : M. Frey  
 Customer : PFLUG

### Results:

Elongation at force:

Leger	Nr	F <sub>max</sub> N	F <sub>break</sub> N/cm	dL(F <sub>max</sub> ) mm	250 N %	500 N %	1000 N %	2000 N %	Force at: 0,1% N	0,2% N	0,5% N	Type / Break
⇒ 1	7725	3090	6,4	0,08	0,12	0,2	0,3	382	1061	3105	V 30 / at joint	
⇒ 2	7842	3140	6,1	0,07	0,11	0,2	0,3	441	1140	3261	V 30 / at joint	
⇒ 3	7316	2930	5,5	0,07	0,11	0,2	0,3	454	1136	3210	V 40 / at joint	
⇒ 4	7674	3070	5,8	0,07	0,11	0,2	0,3	432	1115	3197	V 40 / at joint	



## 50 T5 1000-V (30) + (40)

Breaking strength of the basic material: 6650 N  
 Breaking strength of the joining<sup>1</sup>: 55 – 59 %

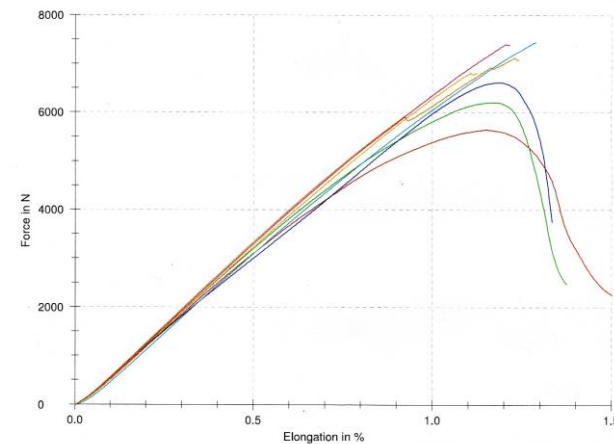
## TEST - BREAKING STRENGTH AND ELONGATION

Article : ZR / SO\_WE\_20160217\_002 Arrange : endless  
 Tape Type : 25 AT5 1000-V (30) / V (40) Testside inside : Tooth-side  
 Dimension : 1000x25x3 Measuring Head : MK3 / 1 kN  
 Carcass : Steelcord Testing Velocity : 20 mm/min  
 Coating : Pretension Fv : 50 N  
 Condition : new Tester : M. Frey  
 Customer : PFLUG

### Results:

Elongation at force:

Leger	Nr	F <sub>max</sub> N	F <sub>break</sub> N/cm	dL(F <sub>max</sub> ) mm	250 N %	500 N %	1000 N %	2000 N %	Force at: 0,1% N	0,2% N	0,5% N	Type
⇒ 1	5646	902	5,7	0,06	0,10	0,2	0,3	521	1193	3101	V 30	
⇒ 2	6208	992	5,8	0,06	0,09	0,2	0,3	534	1216	3204	V 30	
⇒ 3	6616	1500	5,9	0,05	0,09	0,2	0,3	556	1199	3004	V 30	
⇒ 4	7121	2830	6,1	0,05	0,09	0,2	0,3	571	1265	3333	V 40	
⇒ 5	7406	2960	6,0	0,05	0,09	0,2	0,3	551	1239	3298	V 40	
⇒ 6	7445	2980	6,4	0,06	0,11	0,2	0,3	463	1119	3098	V 40	
⇒ 7	6810	2720	5,5	0,06	0,09	0,2	0,3	534	1217	3232	V 40	

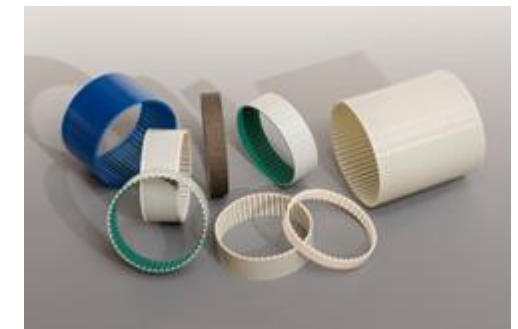


## 25 AT5 1000-V (40)

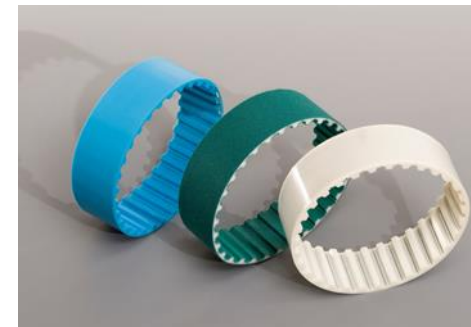
Breaking strength of the basic material: 6870 N  
 Breaking strength of the joining<sup>1</sup>: 49 – 54 %



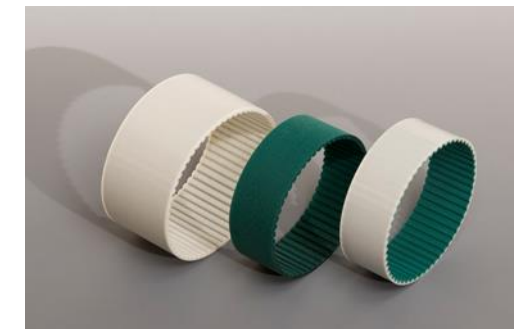
20 T2,5 from 250 mm



16 T5 from 250 mm  
 25 T5 from 250 mm  
 32 T5 from 250 mm  
 50 T5 from 300 mm  
 100 T5 from 300 mm



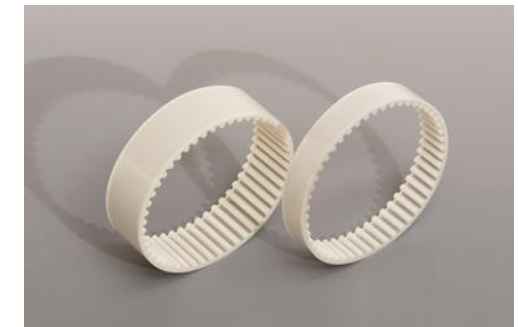
32 T10 from 310 mm  
 50 T10 from



32 AT5 from 270 mm  
 50 AT5 from 310 mm



32 AT5 K6 from 330 mm



15 5M from 250 mm  
 25 5M from 250 mm  
 50 5M from 300 mm



1" XL from 254 mm

50 AT10 from mm  
 50 WR5 from 260 mm  
 100 WR5 from 300 mm  
 50 WR10 from 310 mm  
 100 WR10 from 310 mm ??

## Deliverable types

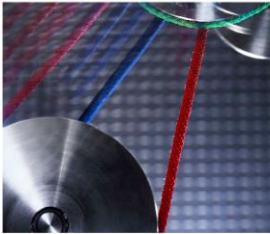
	steel	HF	NFT	NFB	NFT/NFB	antistatic fabric	PU-foil	Kevlar	NFT	NFB	NFT/NFB	antistatic fabric
20 T2,5	X											
16 T5	X		X	X	X	X		X	X	•	•	•
25 T5	X		X	X	X	X		X	X	•	•	•
32 T5	X		X	X	X	•		X	X	•	•	•
50 T5	X		X	•	•	•		X	X	•	•	•
100 T5	X		X	•	•	•		X	X	•	•	•
32 T10	X	X	X	X	X	•	X	X	X	•	•	•
50 T10	X		X	X	X		X	X	X			
32 AT5	X		X	•	X	•		X	X	•	•	•
50 AT5	X		X	•	•	•		X	X	•	•	•
50 AT10	X	X	X	X	X		X	X	X			
32 AT5 K6	X		X		X	X	•					
15 5M	X		X	•	•			X	X	•	•	
25 5M	X		X	•	•			X	X	•	•	
50 5M	X		X					X	X			
1" XL	X		X	•	•			X	X	•	•	
50 WR5	X							X				
100 WR5	X							X				
50 WR10	X	X						X				
100 WR10	X	X						X				

X available at short notice  
 • Delivery time on request

<sup>1</sup> Depending on the finger size and shape used. Tested on endless welded belts.

**Further types and dimensions on request**

**Company profile**



**Testing Service**



**Welded timing belts  
in short lengths**



**Round belts for  
heat-setting machines**



**Endless injected round belts**



**Endless turned round belts**



**Endless plaited round belts**



**Hooked belts**



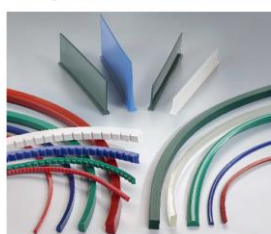
**PU round- and profile belts**



**PU profile belts and  
special profiles**



**PU tracking guides, cleats  
and guides**

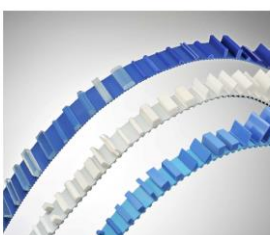


**Food line**

Types for the food industry compliant to EU/FDA



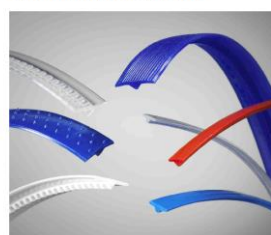
**PU cleats and block profiles**



**PU Poly-V belts**



**PU-V-guide belts  
compliant to EU/FDA**



**PU coatings**

