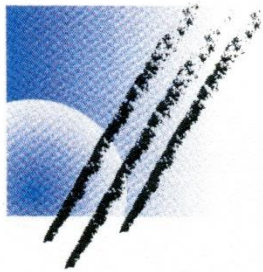
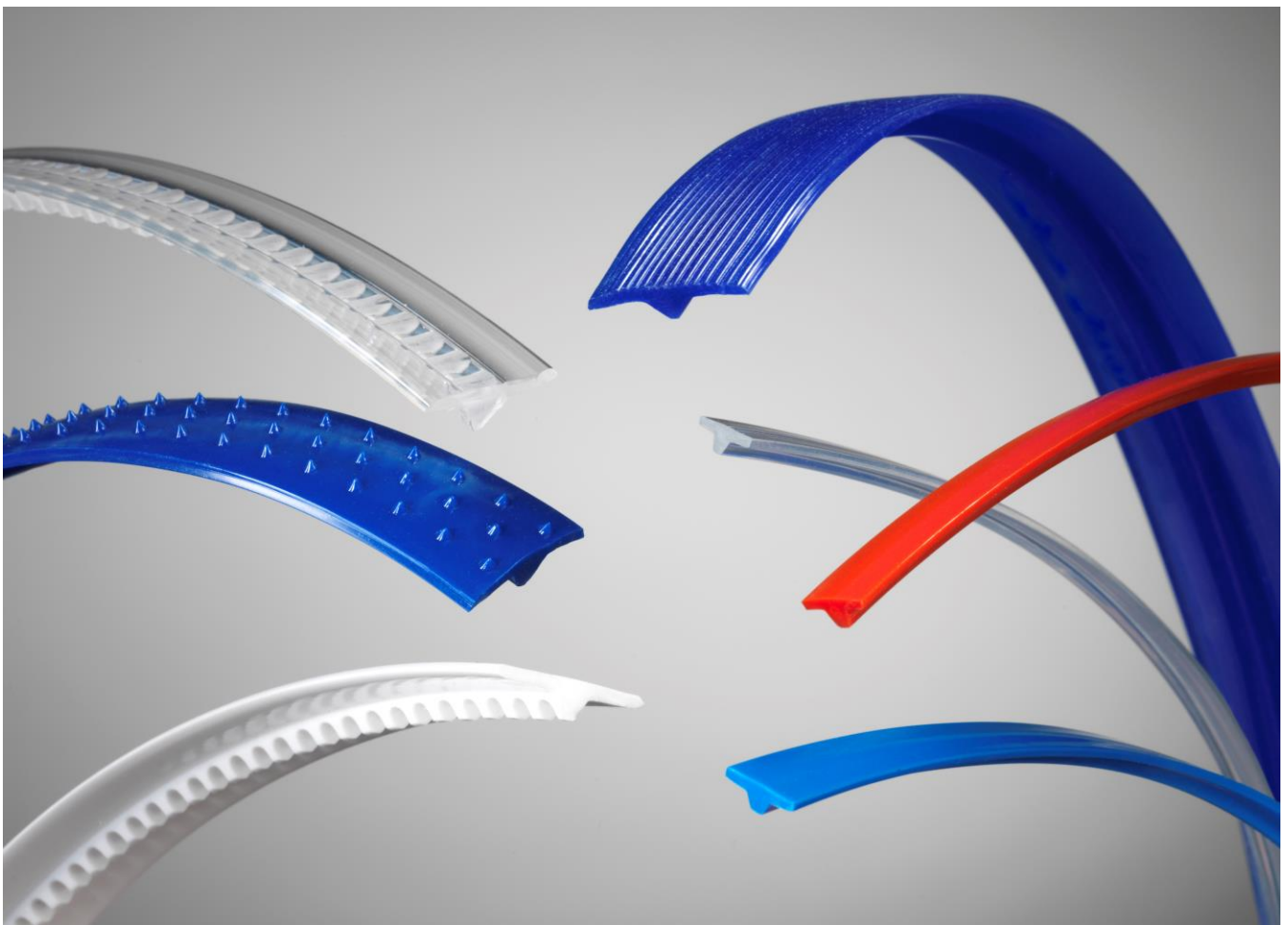


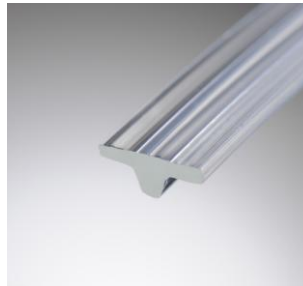
# pflug.



*Driving gear and conveyor  
technology  
Profiled belts  
Continuous round belts  
turned and plaited*

## **PU-V-Guide belts compliant to EU/FDA**





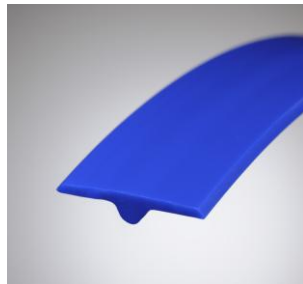
### PU-V-Guide belt 9.5 x 3.8 mm

Type	Temperature-resistance °C	Friction coefficient to V2A polished steel <sup>1</sup>	Minimum pulley diameter with notch/without notch		Width mm		Height mm	
					W	W1	H	H1
70 Sh.A sapphire, EU/FDA	-30°C - +55°C	0,65 μ	22 mm	---	9,5	3,5	3,8	1,5
75 Sh.A red / sky blue, EU/FDA	-20°C - +60°C	0,60 μ	27 mm	---	9,5	3,5	3,8	1,5
80 Sh.A transparent, EU/FDA	-20°C - +60°C	0,55 μ	30 mm	---	9,5	3,5	3,8	1,5
85 Sh.A ultramarine blue, EU/FDA	-20°C - +60°C	0,55 μ	32 mm	---	9,5	3,5	3,8	1,5
90 Sh.A white, EU/FDA	-15°C - +70°C	0,45 μ	38 mm	---	9,5	3,5	3,8	1,5
Package size	50 m							



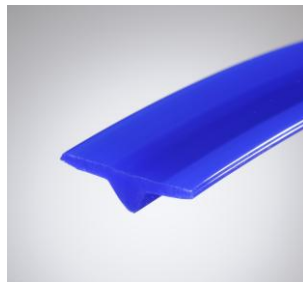
### PU-V-Guide belt 10 x 4 mm

Type	Temperature-resistance °C	Friction coefficient to V2A polished steel <sup>1</sup>	Minimum pulley diameter with notch/without notch		Width mm		Height mm	
					W	W1	H	H1
70 Sh.A sapphire, EU/FDA	-30°C - +55°C	0,65 μ	24 mm	---	10	3,1	4	1,8
75 Sh.A red / sky blue, EU/FDA	-20°C - +60°C	0,60 μ	28 mm	---	10	3,1	4	1,8
80 Sh.A transparent, EU/FDA	-20°C - +60°C	0,55 μ	32 mm	---	10	3,1	4	1,8
85 Sh.A ultramarine blue, EU/FDA	-20°C - +60°C	0,55 μ	34 mm	---	10	3,1	4	1,8
90 Sh.A white, EU/FDA	-15°C - +70°C	0,45 μ	40 mm	---	10	3,1	4	1,8
Package size	50 m							



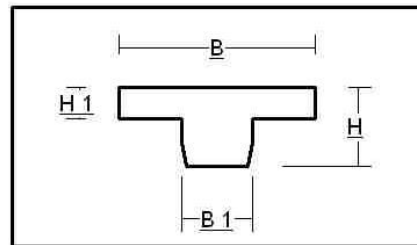
### PU-V-Guide belt 25 x 5 mm

Type	Temperature-resistance °C	Friction coefficient to V2A polished steel <sup>1</sup>	Minimum pulley diameter with notch/without notch		Width mm		Height mm	
					W	W1	H	H1
70 Sh.A sapphire, EU/FDA	-30°C - +55°C	0,65 μ	30 mm	---	25	5,0	5	2
75 Sh.A red / sky blue, EU/FDA	-20°C - +60°C	0,60 μ	35 mm	---	25	5,0	5	2
80 Sh.A transparent, EU/FDA	-20°C - +60°C	0,55 μ	40 mm	27 mm	25	5,0	5	2
85 Sh.A ultramarine blue, EU/FDA	-20°C - +60°C	0,55 μ	43 mm	29 mm	25	5,0	5	2
90 Sh.A white, EU/FDA	-15°C - +70°C	0,45 μ	50 mm	33 mm	25	5,0	5	2
Package size	30 m							

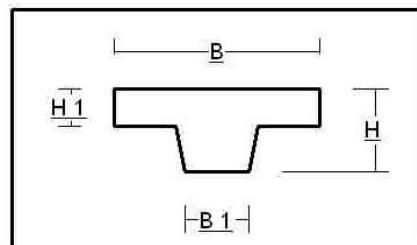


### PU-V-Guide belt 25 x 7 mm

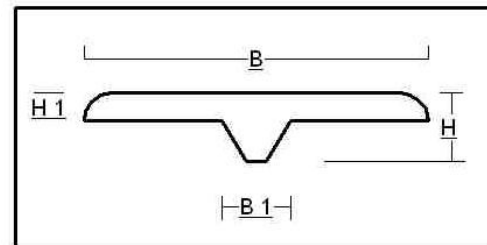
Typ	Temperature-resistance °C	Friction coefficient to V2A polished steel <sup>1</sup>	Minimum pulley diameter with notch/without notch		Width mm		Height mm	
					W	W1	H	H1
70 Sh.A sapphire, EU/FDA	-30°C - +55°C	0,65 μ	42 mm	---	25	7,5	7	2
75 Sh.A red / sky blue, EU/FDA	-20°C - +60°C	0,60 μ	50 mm	---	25	7,5	7	2
80 Sh.A transparent, EU/FDA	-20°C - +60°C	0,55 μ	56 mm	37 mm	25	7,5	7	2
85 Sh.A ultramarine blue, EU/FDA	-20°C - +60°C	0,55 μ	60 mm	40 mm	25	7,5	7	2
90 Sh.A white, EU/FDA	-15°C - +70°C	0,45 μ	70 mm	47 mm	25	7,5	7	2
Package size	30 m							



9,5 x 3,8



10 x 4



25 x 5 / 25 x 7

We solely use raw materials that are highly flexible at low temperatures and highly resistant to hydrolyses and microbes. Particularly suitable for the use in wet areas.

Recommended pretension: 70 - 85 Sh. A 6%, 90 Sh. A 4%

From 300 mm on, all profiles are delivered shape-welded ex-factory.

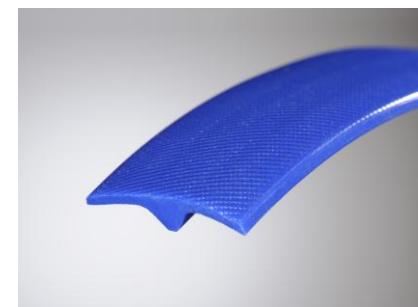
Profiles 25 x 5mm and 25 x 7 mm also available with surface structure, from 350 mm endless structured. Surface structures for 9.5 x 3.8 and 10x4 mm on request.

#### Special characteristics

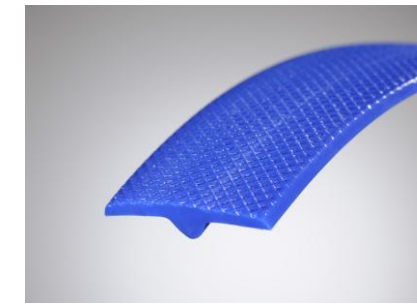
- easily weldable
- highly abrasion-resistant
- high durability
- resistant to oils and fats
- suitable for very high mechanical stresses
- very high adhesion
- excellent resistance to hydrolyses
- very good resistance to microbes
- especially suitable for the use in wet areas
- excellent flexible at low temperatures so especially suitable in fresh and frozen areas

See PU-V-Guide belt data sheets for technical specifications.

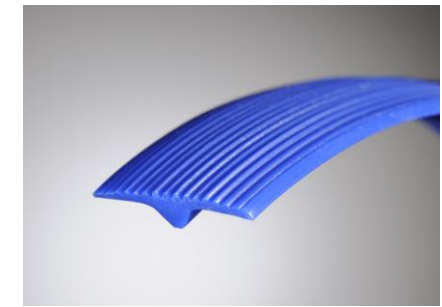
#### Surface structures



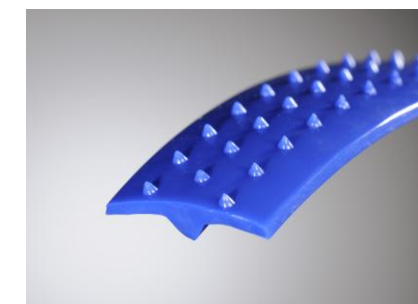
Mesh structure



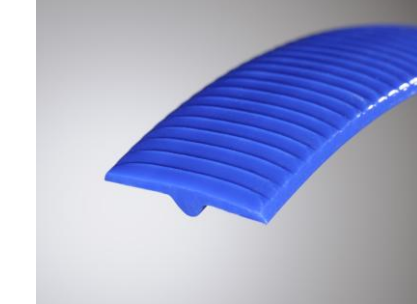
Negative pyramid



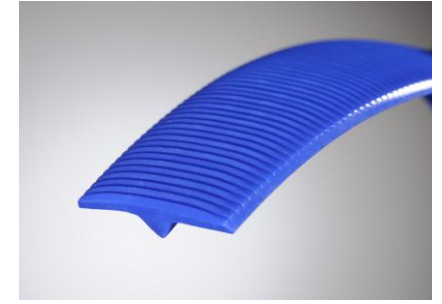
Lengthwise groove



Spikes



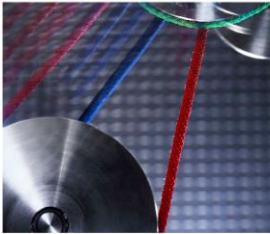
Saw tooth



Crosswise groove

<sup>1</sup> According to Pflug test specification SPPN 91.001  
These specifications are target values and non-binding.

**Company profile**



**Testing Service**



**Welded timing belts  
in short lengths**



**Round belts for  
heat-setting machines**



**Endless injected round belts**



**Endless turned round belts**



**Endless plaited round belts**



**Hooked belts**



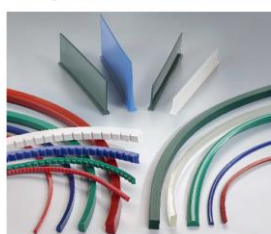
**PU round- and profile belts**



**PU profile belts and  
special profiles**



**PU tracking guides, cleats  
and guides**

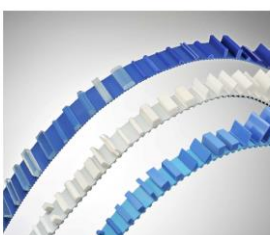


**Food line**

Types for the food industry compliant to EU/FDA



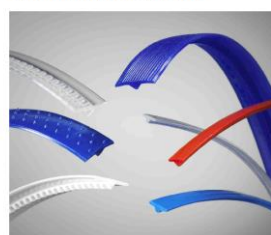
**PU cleats and block profiles**



**PU Poly-V belts**



**PU-V-guide belts  
compliant to EU/FDA**



**PU coatings**

