

# pflug.



*Driving gear and conveyor  
technology  
Profiled belts  
Continuous round belts  
turned and plaited*

## Food line

**Types for the food industry compliant to EU/FDA**

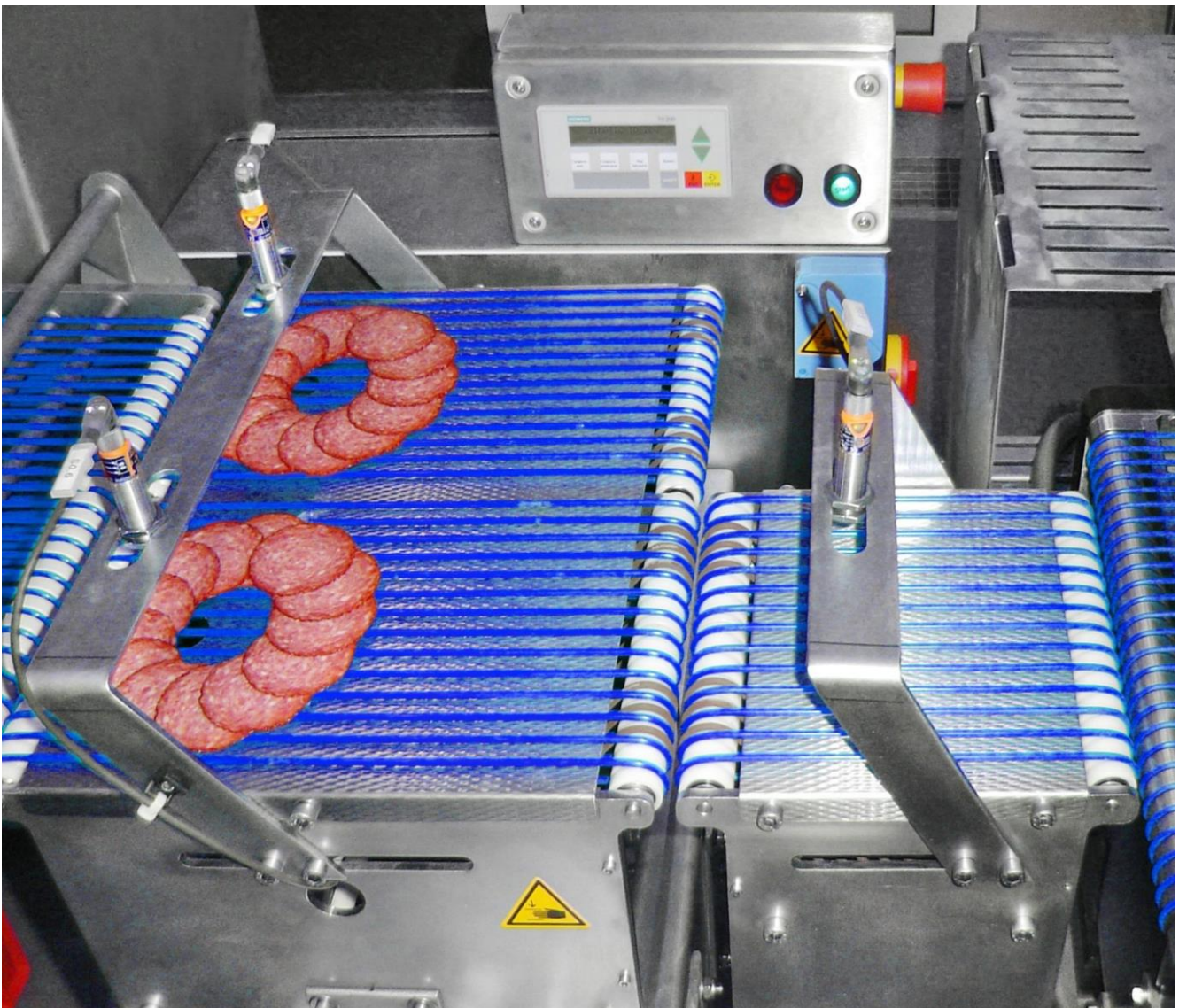


Photo Fa. LESOMAT

# FOOD LINE

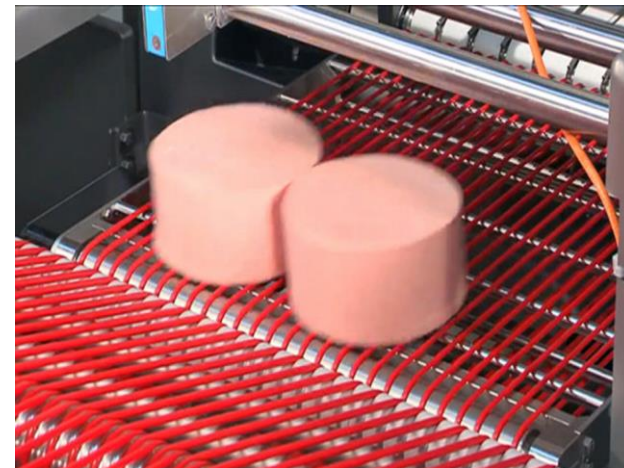
This term defines our types for the direct contact with food in compliance with EU/FDA.

These products have been tried and tested by our customers for many years and are compliant to EC regulation 1935/2004, 2002/72/EC, EU VO No. 10/2011 and the FDA guideline CFR Title 21 of the US Food and Drug Administration for direct contact with unpackaged food.

Standard qualities	Adhesion	Elasticity
60 Sh.A ultramarine blue	very high	high
70 Sh.A sapphire	very high	high
75 Sh.A red / sky blue	high	high
80 Sh.A transparent	high	average
85 Sh.A ultramarine blue	average	average
90 Sh.A white	low	low

Key features:

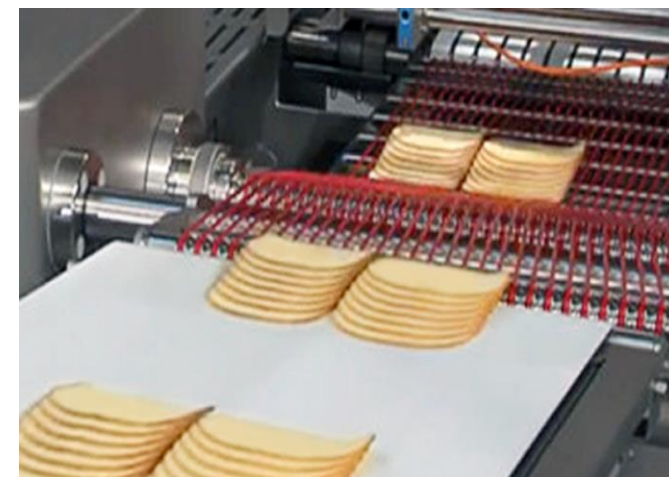
- excellent resistance to hydrolyses
- very good resistance to microbes
- high flexibility at low temperatures
- particularly suitable for the use in wet areas



Due to the high flexibility in low temperatures, frozen food, such as these hamburger patties, which leave the shock freezer at -20°C, can be easily transported. This machine transports 1.5 million patties with a total weight of 68 tons, 6 days a week.



Extremely hygienic and easy to clean, even sticky oils and animal fats can easily be removed. Particularly suitable for the use in wet areas due to excellent resistance to hydrolyses.

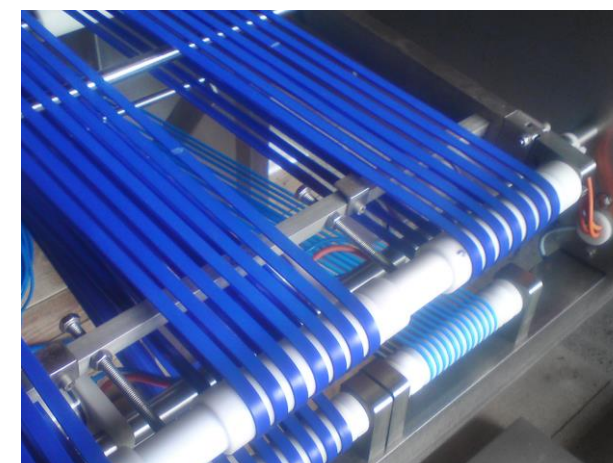


- Each product can be transported and processed safely and efficiently due to the variety of available products and the wide range of qualities.

Due to the wide range of raw materials and their individual properties (e.g. adhesion and stability) in combination with a variety of available profiles we can provide the right product for each application. Regardless of whether you cut, portion, package, garnish, weigh or transport: we have the right solution for you.

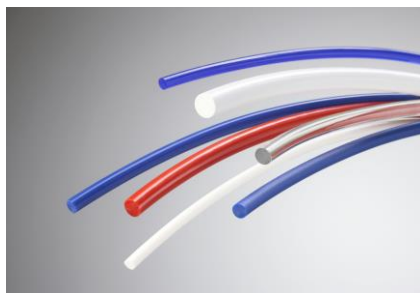


Blue is the preferred colour for many of these profiles because blue is a colour usually not found in foods. Due to abrasion or wear contaminated products can be more easily detected and sorted out via optical controls.



Picture by LESOMAT

We also manufacture special profiles, such as this T-profile 10x6 mm with a V-notch 4x4 mm that was designed for 4 mm Ø round belts and installed in a disc profile in this plant.



#### Round belts

70 Sh.A sapphire 3, 4, 5, 6, 8, 10 mm Ø  
 75 Sh.A red/sky blue 2, 3, 4, 5, 6, 6.3, 8, 10, 12 mm Ø  
 80 Sh.A transparent 2, 3, 4, 5, 6, 7, 8, 10, 12 mm Ø  
 80 Sh.A transparent rough 3, 4, 5, 6 mm Ø  
 85 Sh.A ultramarine blue 2, 3, 4, 5, 6, 8, 10, 12, 15 mm Ø  
 85 Sh.A ultramarine blue rough 3, 4, 5, 6 mm Ø  
 90 Sh.A white 2, 3, 4, 5, 6, 8, 10, 12, 15 mm Ø

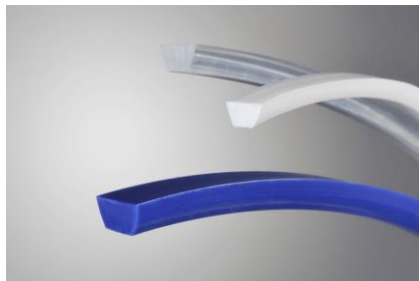
Our allrounder, easy to clean and the right type for every application.



#### Round belts with aramid reinforcements

85 Sh.A ultramarine blue 6, 8, 10, 12, 15 Ø  
 90 Sh.A white 6, 6.3, 8, 10, 12, 15 mm Ø  
 Particularly suitable for long transport distances with high tension.

Delivered ex-factory with lap joint.



#### V-belts

75 Sh.A red / sky blue 6x4 / 8x5 / 10x6 / 13x8 / 17x11 mm  
 80 Sh.A transparent 6x4 / 8x5 / 10x6 / 13x8 / 17x11 mm  
 85 Sh.A ultramarine blue 6x4 / 8x5 / 10x6 / 13x8 / 17x11 mm  
 90 Sh.A white 8x5 / 10x6 / 13x8 / 17x11 mm

All types are notched and available for small deflections. Profiles also available with back coatings starting from 10x6 mm.

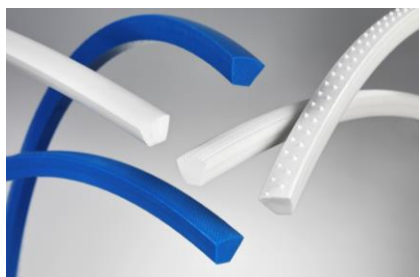


#### V-belts with aramid reinforcements

85 Sh.A ultramarine blue 10x6 / 13x8 / 17x11 mm  
 90 Sh.A white 13x8 / 17x11 mm

Particularly suitable for long transport distances with high tension. Delivered ex-factory with lap joint.

All types are notched and available for small deflections. Profiles also available with back coatings starting from 10x6 mm.



#### V-belts with a convex back

75 Sh.A red / sky blue 10x8, 13x11 mm, 17x14 mm  
 85 Sh.A ultramarine blue 10x8, 13x11 mm, 17x14 mm  
 90 Sh.A white 10x8, 13x11 mm, 17x14 mm

Predestined for transport applications with protruding disc edges. Available back structures and types with reinforcements on request. All types are notched and available for small deflections.



#### Hollow belts

75 Sh.A red 4,8 / 6,3 / 8,0 / 9,5 / 12,5 / 15 mm Ø  
 85 Sh.A ultramarine blue 4,8 / 6,3 / 8,0 / 9,5 / 12,5 / 15 mm Ø

Suitable for nipple joints - welding at the plant is not necessary and downtimes are considerably reduced. With butt-welding particularly suitable for crossed inlets, because the weld is relieved from lateral shear forces by the hollow space.

#### V-Guide belts

70 Sh.A sapphire 9.5x3.8 / 10x4 / 25x5 and 25x7 mm  
 75 Sh.A red / sky blue 9.5x3.8 / 10x4 / 25x5 and 25x7 mm  
 80 Sh.A transparent 9.5x3.8 / 10x4 / 25x5 and 25x7 mm  
 85 Sh.A ultramarine blue 9.5x3.8 / 10x4 / 25x5 and 25x7 mm  
 90 Sh.A white 9.5x3.8 / 10x4 / 25x5 and 25x7 mm  
 Profiles 25x5 and 25x7 also available as notched profiles, for smallest deflections and with structured backs. Delivered shape-welded ex-factory.

#### Endless wound round belts

85 Sh.A ultramarine blue 3, 4, 5, 6, 7, 8, 9, 10 mm Ø  
 92 Sh.A white 3, 4, 5, 6, 7, 8, 9, 10 mm Ø

Endless types are particularly suitable for small deflections. Smooth packaging material is securely transported without slipping due to the coarse structure of the surface and the minimum contact area.

#### Hook belts with 90° V2A hooks

75 Sh.A red / sky blue 5.6 mm Ø  
 80 Sh.A transparent 5.6 mm Ø  
 85 Sh.A ultramarine blue 5.6 mm Ø  
 90 Sh.A white 5.6 mm Ø

Specifically designed for roller conveyors in the food- and packaging industry. Downtimes can be considerably reduced because time-consuming welding is not necessary.

#### Flat profiles

60 Sh.A ultramarine blue, size: 1-4 mm, width max. 170 mm\*  
 70 Sh.A sapphire, size: 1-4 mm, width max. 170 mm\*  
 75 Sh.A red / sky blue, size: 1-4 mm, width max. 170 mm\*  
 80 Sh.A transparent, size: 1-4 mm, width max. 170 mm\*  
 85 Sh.A ultramarine blue, size: 1-4 mm, width max. 170 mm\*  
 90 Sh.A white, size: 1-4 mm, width max. 170 mm\*

Available as elastic flat bands or with different surface structures as coating material.

Size and available width depend on the structure.

#### Square profiles

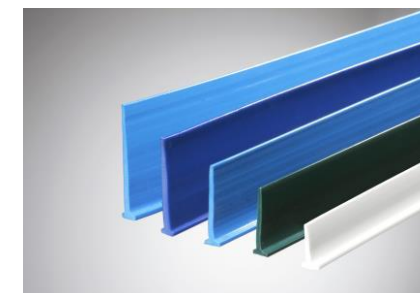
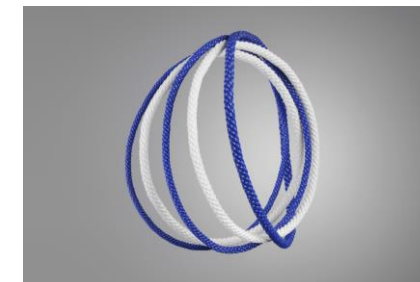
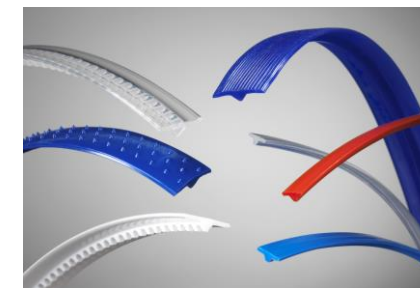
60 Sh.A ultramarine blue 4x4, 5x5, 8x8, 9x9, 10x10, 12x12, 13x5, 15x8 mm  
 70 Sh.A sapphire 4x4, 5x5, 8x8, 9x9, 10x10, 12x12, 13x5, 15x8 mm  
 75 Sh.A red / sky blue 4x4, 5x5, 8x8, 9x9, 10x10, 12x12, 13x5, 15x8 mm  
 80 Sh.A transparent 4x4, 5x5, 8x8, 9x9, 10x10, 12x12, 13x5, 15x8 mm  
 85 Sh.A ultramarine blue 4x4, 5x5, 8x8, 9x9, 10x10, 12x12, 13x5, 15x8 mm  
 90 Sh.A white 4x4, 5x5, 8x8, 9x9, 10x10, 12x12, 13x5, 15x8 mm

Weld-on profiles for conveyor belts and tooth belts. Further dimensions on request.

#### T-cleats

85 Sh.A ultramarine blue T20 / T30 / T40 / T50 / T60  
 90 Sh.A white T20 / T30 / T40 / T50 / T60  
 90 Sh.A petrol T20 / T30 / T40 / T50 / T60  
 90 Sh.A sky blue T20 / T30 / T40 / T50 / T60  
 90 Sh.A ultramarine blue T20 / T30 / T40 / T50 / T60

Weld-on profiles for conveyor belts and tooth belts. For the secure transport of loose material up- and downwards.



We manufacture V-ledges compliant to EU/FDA to be welded in conveyor belts and tooth belts from 70 Sh.A - 92 Sh.A. All types and dimensions also available as notched profiles.

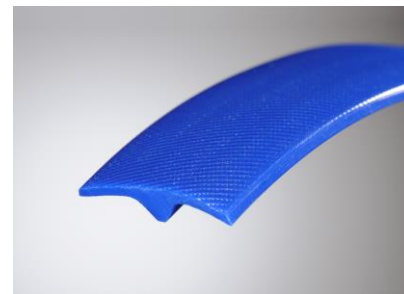
With our experience of many decades we gladly offer advice for choosing the right type for you. All profiles delivered ready-for-use ex-factory. Please note that not all profiles are available from stock. Special colours on request. Technical specifications can be found in the respective product data sheets.

## Guidelines for plastic materials in direct contact with food

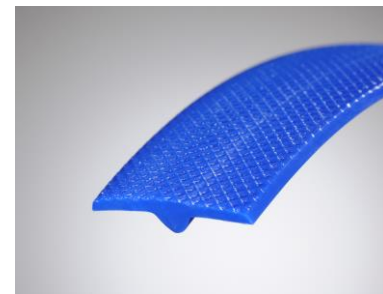
EC guideline 1935/2004	"Framework"-regulation for food contact materials. It includes definitions, restrictions and requirements for these materials including safety, identification and traceability. In appendix 1 of this regulation, 17 groups of materials and articles are listed also including plastics.
2002/72/EC	Generally referred to as the "plastics regulation", it was replaced by regulation (EU) No. 10/2011 on 01.05.2011.
EU VO Nr. 10/2011	"Plastic implementation measure" PIM (on the marketing of plastic materials and articles). Specific measure within the regulation (EG) No. 1935/2004 including positive lists of raw materials and additives that are allowed to be used for the production of plastics in direct contact with food. Requirements the product has to comply with (such as migration value and overall migration limit) are also stipulated in this regulation.
FDA Guideline CFR Title 21	The guideline of the US Food and Drug Administration regulates the release of plastic materials in direct contact with food and medicine via positive lists in the Code of Federal Regulations. Even though this guideline is not in force within the European Union, it is generally used synonymously for the approved use within the food industry.

## Surface structures

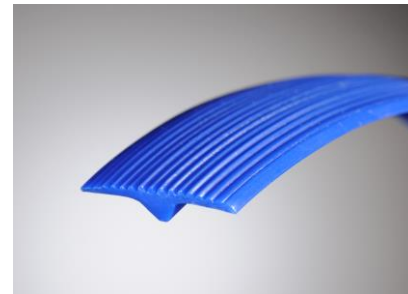
for V-guide belts, V-belts with a convex back and Poly-V-belts



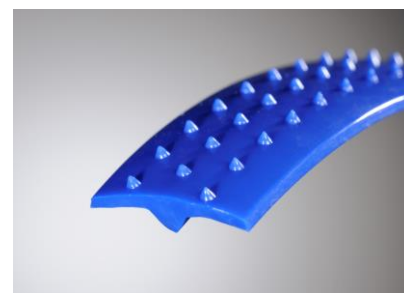
Mesh structure



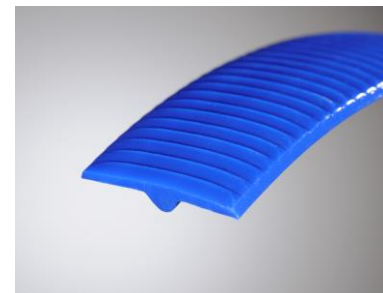
Negative pyramid



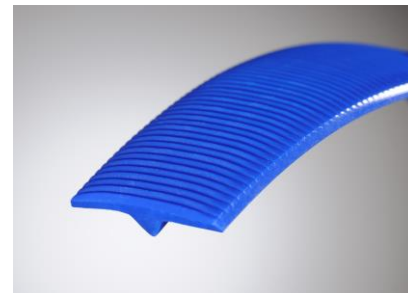
Lengthwise groove



Spikes



Saw tooth

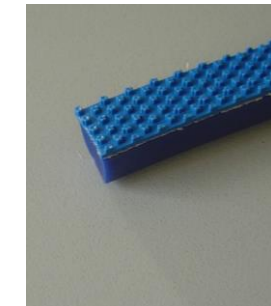


Groove crosswise

## Back coatings for PU-Profile belts compliant to EU/FDA



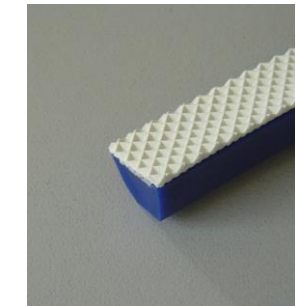
PVC white



PVC Stud blue



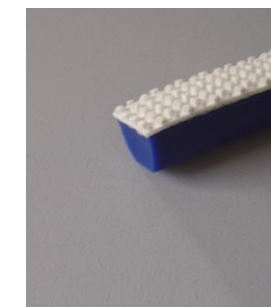
PVC Supergrip white



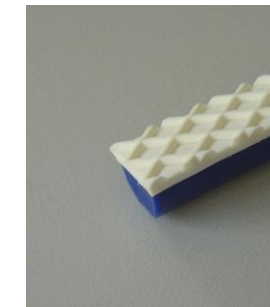
PVC Waffle white



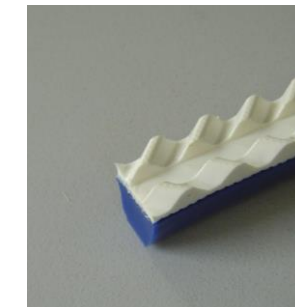
PVC blue



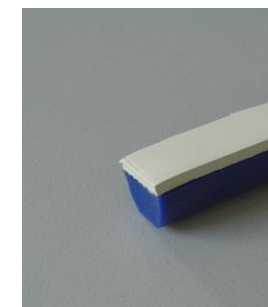
PVC Stud white



PU Waffle white



PVC Fishbone white



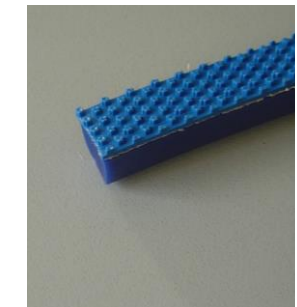
Natural rubber



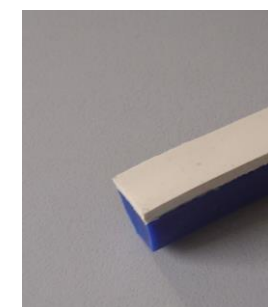
PU white



PVC-Saw tooth white



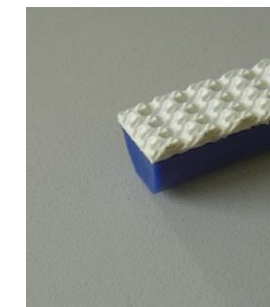
PU-PP Stud blue



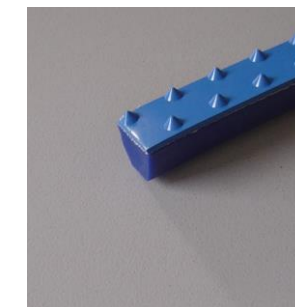
Rubber clear



PU blue



PU Grip white



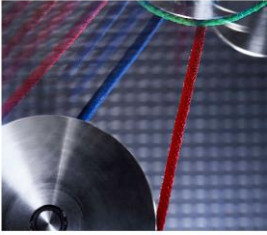
PU-SP blue

We also manufacture guide- and cleat profiles compliant to EU/FDA.

60 Sh.A transparent, blue, red and white  
70 Sh.A transparent, blue, red and white  
75 Sh.A transparent, blue, red and white  
80 Sh.A transparent, blue, red and white  
85 Sh.A transparent, blue, red and white  
90 Sh.A transparent, blue, red, white and petrol

Special colours on request.

**Company profile**



**Testing Service**



**Welded timing belts  
in short lengths**



**Round belts for  
heat-setting machines**



**Endless injected round belts**



**Endless turned round belts**



**Endless plaited round belts**



**Hooked belts**



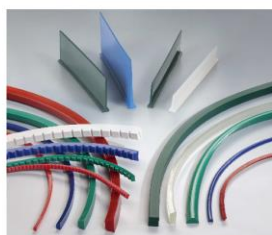
**PU round- and profile belts**



**PU profile belts and  
special profiles**



**PU tracking guides, cleats  
and guides**



**Food line**

Types for the food industry compliant to EU/FDA



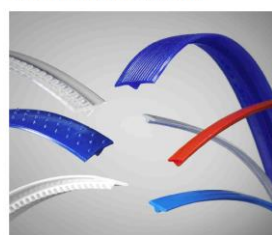
**PU cleats and block profiles**



**PU Poly-V belts**



**PU-V-guide belts  
compliant to EU/FDA**



**PU coatings**

